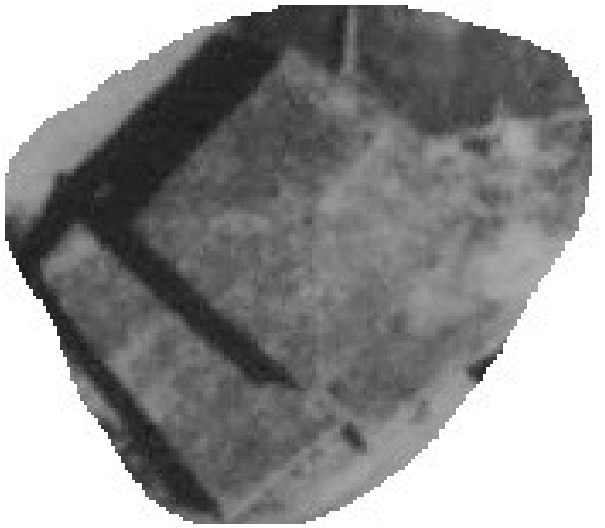
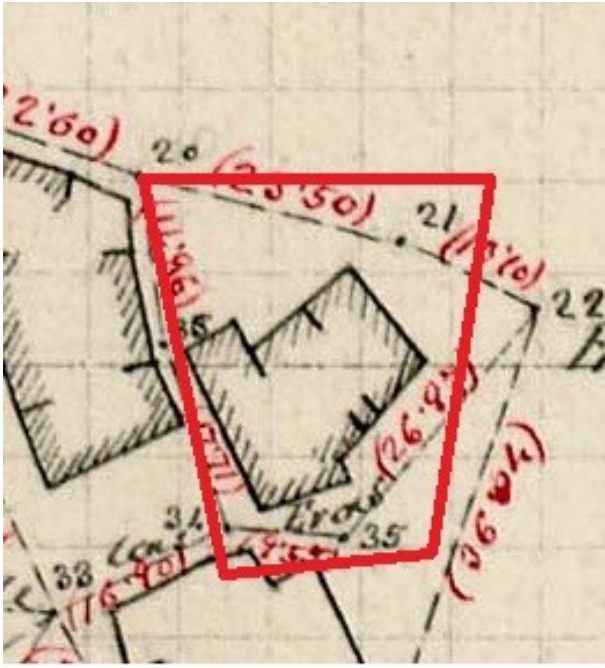
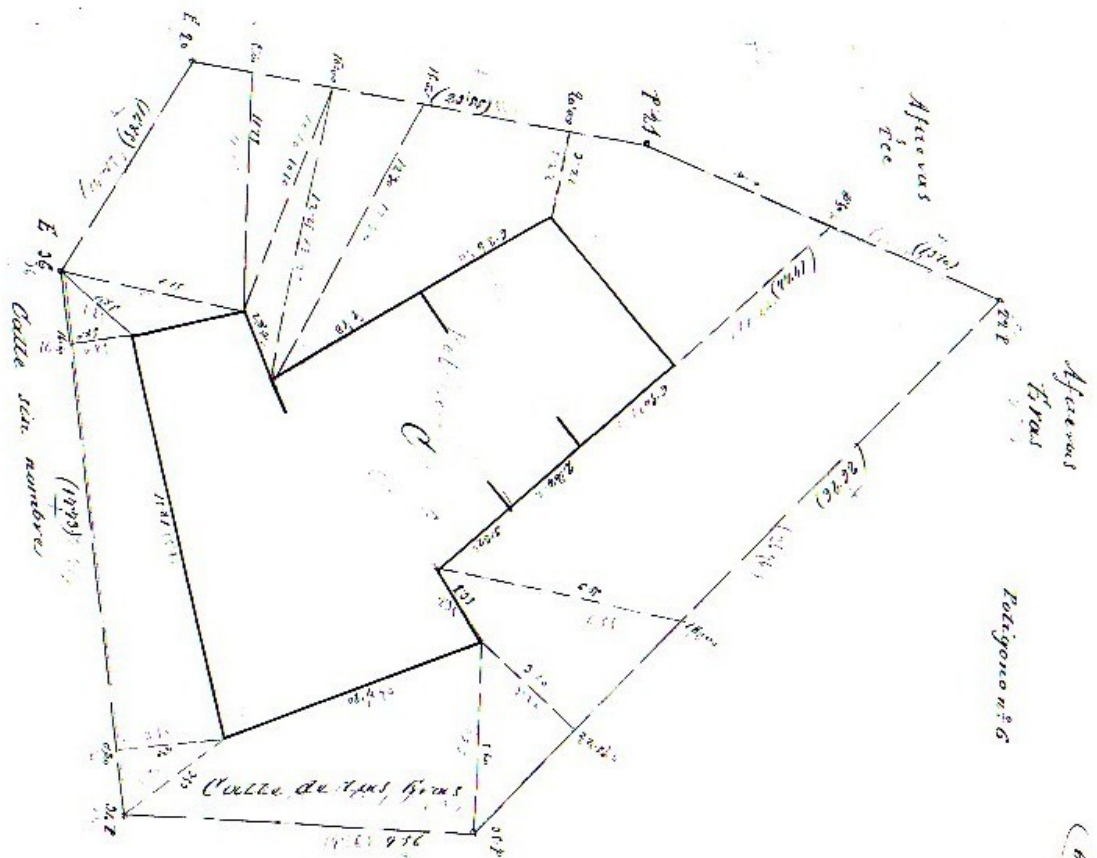


POLÍGONO 6





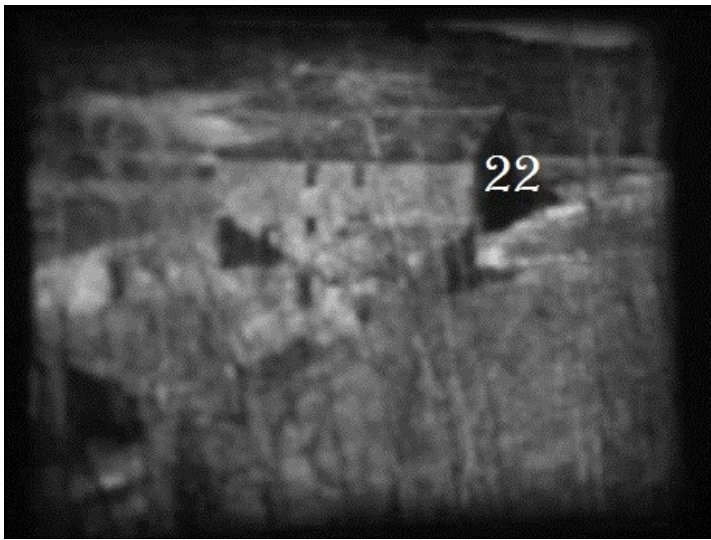
POLÍGONO	FAMILIA	USO
<i>P 06</i>	<i>Jesús García Ramos</i>	<i>Paridera</i>
<i>P 06</i>	<i>Benito Guerrero Guerrero y Raimunda Rey</i>	<i>Casa</i>
<i>P 06</i>	<i>Daniel Ramos Raiz</i>	<i>Casa</i>



(Posterior)



(Posterior)



(Posterior)